

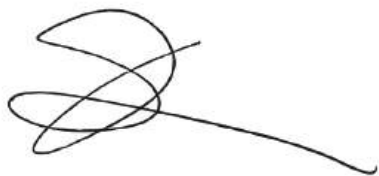


# Our 2024 gender pay gap report

**St Luke's Hospice Plymouth welcomes the government's initiative to improve pay equality through collecting and reporting gender pay data, in April each year.**

St Luke's figures have been calculated in line with the regulations set out in the gender pay gap reporting legislation. The calculation methodology has been checked, and I confirm that these figures have been verified and are accurate.

I am more than confident that the pay structure we have in place ensures that men and women working with us are paid equally for doing equivalent jobs.



**George Lillie**

Chief Executive Officer, St Luke's Hospice Plymouth  
14 February 2025

# 2024 gender pay gap analysis

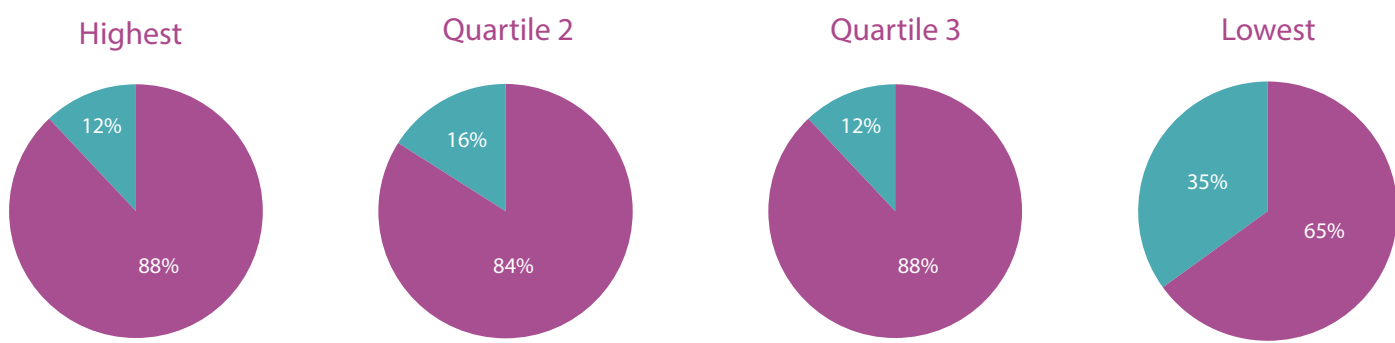
## Pay gap

	Difference between men and women	
	Mean	Median
Hourly fixed pay	-8.5%	-10.1%

The table above shows our overall mean and median gender pay gap between male and female employees based on hourly rates of pay as at the snapshot date (5 April 2024).

As St Luke’s does not pay bonuses to staff and therefore there is no figure to report, the figures shown are the full and accurate pay gap between men and women employed by our organisation.

## Proportion of colleagues per Pay Quartile



The above image illustrates the gender distribution at St Luke’s Hospice Plymouth across four equally sized quartiles, each containing approximately 81 colleagues.